

# PAINSHILL ART FAIR - ARTIST DIRECTORY

FRIDAY 28<sup>TH</sup> MAY 5.30PM – 8.30PM, SATURDAY 29<sup>TH</sup> MAY – TUESDAY 1<sup>ST</sup> JUNE 10AM – 5PM



## GRACE ELLEN

Grace Ellen is a professional artist based in Surrey. Inspired by the great diversity seen in British nature and wildlife, each painting is truly unique and a snapshot of her experience at each location. Grace's work reflects her fascination with capturing and observing light in the landscape. Her often large scale paintings have a truly immersive quality and invite the viewer to step into the scene. From sparkling Cornish seascapes to winding Surrey rivers, her pieces are a visual treat for any nature lover.

W: [www.graceellenart.co.uk](http://www.graceellenart.co.uk) E: [graceellenart@gmail.com](mailto:graceellenart@gmail.com)



## EMILIA CHUBB ART

Emilia has recently graduated in History of Art from the Courtauld Institute of Art in London. This, alongside a foundation diploma in fashion and textiles from UCA, combined with a year of studying fine art at UAL -Chelsea College, has encouraged her to explore and engage with a variety of techniques and mediums. Reaching to both the past and present for inspiration, Emilia is fascinated by both places and people.

W: [www.emiliachubb.art](http://www.emiliachubb.art) E: [hello@emiliachubb.art](mailto:hello@emiliachubb.art)



## NICKY CHUBB ART

Nicky Chubb's work is essentially optimistic, whether painting a tree or a bouquet of flowers, the feelings Nicky aims to convey are hope and happiness. Colour, light, and movement are what inspire her most. She originally trained as a designer (BA hon's Fashion, Central St Martins 1993) and the influence of her love of textiles can be seen in her use of contrasting colours, texture and pattern. During the last year, collaging torn paper to create lively florals against bright backgrounds has replaced Nicky's usual life drawing collages, and being able to recycle old drawings and scrap papers into something new has proved to be an interesting new way of working. Watching the local landscape change through the seasons in all weathers has made Nicky notice new and unexpected tree colours in different light, and she is exploring the different effects, happy accidents and controlled corrosion of mixed media in the backgrounds of her tree paintings to create wilder skies. Drawing the human figure, trying to capture moments in time and changing light is an interest that has always run parallel to Nicky's other work. All Nicky's figure paintings are in mixed media, either quick, gestural drawings or multi-layered combinations of ink, paint, collage and resin.

W: [www.nickychubb.art](http://www.nickychubb.art) E: [info@nickychubb.co.uk](mailto:info@nickychubb.co.uk)



## LAURA DUNMOW

Laura is a professional artist specialising in original oil paintings. She creates landscapes that are contemporary, inspiring and emotive. Her landscapes are of large vistas with atmospheric skies, inspired by W.Turner's brilliant use of light and colour. Her landscapes are inspired from her personal journeys, not of one place, highlights nature's drama with feeling of a mood, conveyed in a realistic but impressionistic style. Laura takes commissions that celebrate events or milestones, always capturing moments to connect.

W: [www.fusionartsonline.co.uk](http://www.fusionartsonline.co.uk) E: [ldunmow@btinternet.com](mailto:ldunmow@btinternet.com)



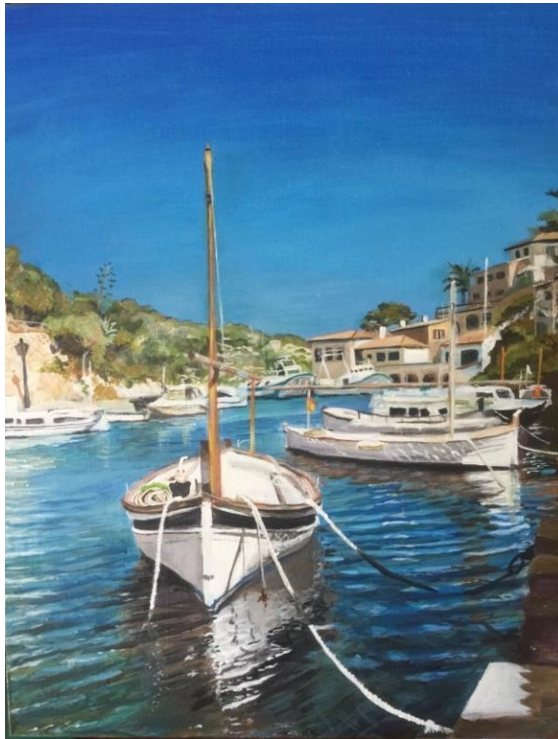
## HEATHER MILLER PAINTINGS

Inspired by a love of nature, Heather's aim as an artist is to engage and intrigue the viewer and draw them into her work. She mindfully explores colour and light in each painting, conscious of how these elements lift the spirit and encourage connection with the subject.

The seasons, water and changing light all provide rich influences on her art. Her paintings are an emotional response to what she sees rather than a facsimile encouraging the viewer to find something different each time they look. She works chiefly in acrylics and acrylic inks which lend themselves to working quickly and expressively with a glorious array of colours.

In addition, Heather also demonstrates her working process to art societies around the UK and has also taught at The JoeDaisy Studio, Art Van Go and other teaching venues. She regularly exhibits at Contemporary Art Fairs, The Mardleybury Gallery and various art shows.

W: [www.heathermillerpaintings.com](http://www.heathermillerpaintings.com) E: [heather@heathermillerpaintings.com](mailto:heather@heathermillerpaintings.com)



## CHERRY PARSONS ART

Cherry Parsons Art is an independent, family-run art and gift business based in Horsham, West Sussex. Cherry has been an artist for many years, regularly hosting stands at Exhibitions and Fairs up and down the country. Cherry's work can now be found on walls in private houses in most corners of the globe.

Working mainly in acrylics or oils, Cherry enjoys creating portraiture, seascapes and landscapes. Her work incorporates light, reflections, water or humour.

W: [www.cherryparsonsart.com](http://www.cherryparsonsart.com) E: [info@cherryparsonsart.com](mailto:info@cherryparsonsart.com)



## ALISON G SAUNDERS

Alison's artwork is primarily in printmaking, painting and journal making, using each to inform the other. Colour is the driving force behind that art she makes, and she loves to challenge herself and finding new ways to make and use her art. She enjoys taking on all sorts of projects for a variety of clients both public and private and uses different techniques and subject matter in order to meet each client's needs. Alison enjoys teaching people from aged four to adults and everything in between. To find out more please visit her website to see examples of past works.

W: [www.alionsgaunders.art](http://www.alionsgaunders.art) E: [alison@alionsgaunders.net](mailto:alison@alionsgaunders.net)



## ZAZA LEWIS

Zaza Lewis is an award-winning artist who has chosen scalpels and scissors instead of brushes. She then mixes vibrant plain fabrics to create bold and contemporary pieces.

Zaza has many sources of inspiration, but she looks for subjects best suited to her unusual skill. She has an eye for architecture – from the intricate ironwork of a balcony or doorway, to a pier and beach, or a Yorkshire coastal town. Plants, from the foxgloves to a field full of daisies also take pride in her collection, but this wouldn't be complete without unusual subjects such as a box of clementines or a basket of freshly picked tomatoes.

However varied Zaza's subjects are, the bold decisive designs with strong contrasts and vibrant colours, feel coherently created by the same artist who loves to find a new fun angle to look at a familiar scene.

Originally from France, Zaza has been living in Derbyshire since she was 18. You will see both her French roots and her adopted country – including her own garden – reflected in her work.

Zaza had a solo exhibition in Nottingham after winning the Judges' First Prize Summer Open Exhibition 2018. This event was judged by a panel of 6 gallery-owners and art professionals in Nottingham. She was also awarded a Highly Commended – certificate for the Emerging Artist of the year Award Winter 2019, by Creates Galleries in Monmouth.

W: [www.artizaza.com](http://www.artizaza.com) E: [zazalewis.artizaza@gmail.com](mailto:zazalewis.artizaza@gmail.com)



## SARAH SIMONDS-GOODING

Sarah's previous training and career as a graphic designer has influenced her art style. It is through the graphic medium that she has discovered a love of pattern, print and colour and started creating art to reflect these passions. The feeling of continuation and the subtle changes that occur over moments in time is often the basis of her work. It could be the more obvious moments in time like the continual, subtle changes to the movement of water ebbing and flowing, the changes to a skyline at different times throughout a day or the patterns created as you walk through a wood. But it also delves into more abstract moments in time, like the continuation and fragility of breathing, the changes of ones mood throughout a day or month, or memories of the past that become fragments of moments in time, as the memory doesn't absorb the whole scene just selected parts. Working mainly in mixed media, Sarah's art is abstract and pattern like with a repetitive nature.

W: [www.sarahsimonds-gooding.com](http://www.sarahsimonds-gooding.com) E: [sarah@sarahsimonds-gooding.com](mailto:sarah@sarahsimonds-gooding.com)



## ANDY WALKER

Living and working in the Cotswolds Andy Walker's portfolio includes Landscapes, Seascapes and Cityscapes. Andy became a professional artist following his selection to exhibit in London at the *Saatchi Gallery* and *Chelsea College of Arts* in 2017.

Andy's artwork, inspired by his own photography, comprises intricate 'mosaics' of thousands of **hand-drawn** triangles, each one painstakingly shaped, arranged and meticulously coloured. Using a stylus and a tablet, as a 'digital canvas', Andy selects precise hues and tones to achieve vibrancy, vivid colour and maximum depth of field in each piece.

Andy's work, available only in strictly Limited Editions, is all produced as high quality *Giclée Prints*, using non-fade archival papers. Andy's work is included in Private Collections across the world, including Australia, Belgium, France, Italy, Sweden, USA and the UK.

W: [www.andywalkerartist.com](http://www.andywalkerartist.com) E: [info@andywalkerartist.com](mailto:info@andywalkerartist.com)



# CAROL GILLAN FINE ART

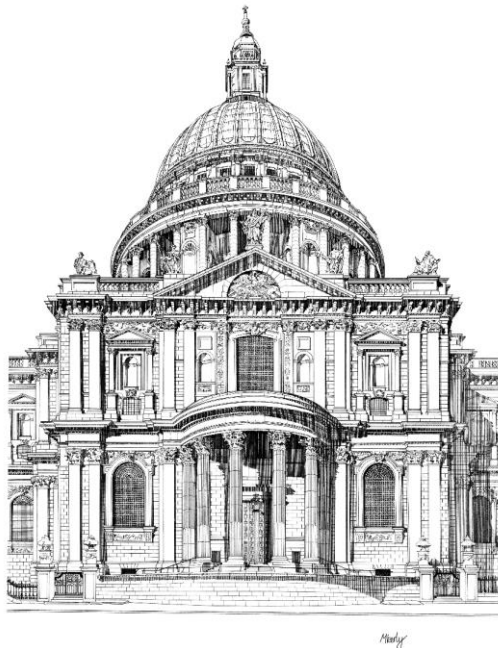
Original oil & resin artworks.

Oils of farm animals & horses in a unique & original style.

Resin Mixology – mesmerising shapes, forms & colours of resin art – zen for your eyeballs!

Featured 'Best House in Town' BBC1, originals/prints exhibited worldwide, works licensed.

W: [www.carolgillan.com](http://www.carolgillan.com) E: [carolgillanart@gmail.com](mailto:carolgillanart@gmail.com)



# MAX KERLY

Inspired by architecture and a real passion for drawing, Max intricately depicts scenes and buildings of particular beauty in his eyes. His focus is to capture the minute details within his chosen subject, mostly using very fine pens, Max is able to pick out these very small details within his drawings to a very high degree of visual accuracy.

W: [www.Maxkerly.co.uk](http://www.Maxkerly.co.uk) E: [Maxx\\_kerly@hotmail.com](mailto:Maxx_kerly@hotmail.com)



## MARIA YADEGAR ART

Maria is a contemporary Hampshire landscape artist, painting en plein air and in her studio. Maria paints in oils and acrylics, capturing the local landscape, as well as the south coast. The effects of colour and light and how this is reflected in the ever changing landscape throughout the seasons are the biggest influences in her work.

W: [www.mariayadegar.art](http://www.mariayadegar.art) E: [my@mariayadegar.art](mailto:my@mariayadegar.art)



## MARION DEACON

The art Marion creates explores the beauty of our landscapes. A tree is so much more than a tree. Colour plays a vital role in Marion's work and richness of depth is achieved through using a multi layered, mixed media approach.

Collectors resonate with these passionate, joy-filled paintings and they explain 'it is obviously work by Marion as it celebrates life, love and adventure'.

Marion is a heart-led artist whose passion for life, family and adventure shines out of her paintings. In owning an original by Marion Deacon you will be allowing this beautiful energy into your home enabling you to connect with it daily.

W: [www.mariondeacon.com](http://www.mariondeacon.com) E: [mariondeacon@btinternet.com](mailto:mariondeacon@btinternet.com)



## NATALIE MAXTED

Natalie Maxted focuses on acrylic portrait painting in the digital age. Today, images are edited, over-processed with high saturation, blasted with extreme contrasts or filters. But these images still often contain the raw human expression reflecting a particular mood, moment, or emotion unique to that moment. Natalie's art mimics today's image processing culture, but instead of using digital tools to accentuate every pixel, she uses traditional hand painting to strip away distracting details, letting the subject's emotion define the aesthetic.

Natalie's eye-catching work has been exhibited in galleries and art fairs worldwide. Art Nou Milleni in Barcelona, The ST'ART art Fair in Strasbourg, and The Harbour Fine Art Gallery in Weymouth, Dorset are just a few of the galleries/events Natalie has featured in. Natalie's paintings have been published in several magazines, and apart from being involved in several awards, her recent painting "Pathogen" was featured in the Cambridge Independent Newspaper as an artwork that is "testing the nation's temperature." Natalie's art is currently being exhibited in The King House Gallery in Stratford-upon-Avon and in May, her work will be in London at the OXO Tower Gallery with the Chaiya Art Awards.

In addition to her series work, Natalie also creates bespoke prints in different sizes and takes commissions on a regular basis from live sittings and/or photographs. If you would like more information on how to commission a work nationally or internationally, please contact her studio directly through email or telephone or visit her booth at Painshill Art Fair.

W: [www.nataliemaxted.com](http://www.nataliemaxted.com) E: [natalie@nataliemaxted.com](mailto:natalie@nataliemaxted.com)

## SUE PALMER-SIMMONS GLASS

Sue Palmer-Simmons is a fused glass artist who creates unique glassware from her workshop in the South Downs National Park. Every piece is lovingly handmade, from bespoke bowls and coasters to jewellery, plates, and decorations. Her one-of-a-kind fused glass pieces are on display across the UK at galleries in Scotland, York, and West Sussex.

With a background in jewellery making and designing, Sue also creates fused glass commission projects on request. During lockdown, Sue spent her time experimenting with new methods and techniques. She has now added Pate de Verre bowls to her repertoire and will be exhibiting these for the first time at the Painshill Art Fair.

W: [www.suepalmersimmons.com](http://www.suepalmersimmons.com) E: [suepalmersimmons@gmail.com](mailto:suepalmersimmons@gmail.com)







# CAROLINE WALSH-WARING, ARTIST

Based in Somerset, surrealist painter, Caroline Walsh-Waring has developed her own unique style through constant practice and allowing herself to be inspired by the seemingly mundane. As a child she drew on anything she could lay her hands on, an obsession she carried through school, Art School, and work; finally undertaking further training whilst working in London and participating in courses in Europe.

Encouraged to draw by a creative father who died when she was young, she was deterred by a practical mother and a need to support herself financially, resulting in initially turning her back on an artistic career. She was however, continually drawn towards creativity and her later training confirmed what she really wanted and needed to fulfil her life.

Working for several years as a professional artist, she is stimulated by the landscape, nature and the human condition. Shapes, colour, and light conjure up images in her mind, resonating echoes of past experiences, stimulating her active and distinctive thought processes with a flow and musicality, utterly unique to her work.

Oil on Canvas is her main medium; she also produces images with watercolour, pen and pencil as the mood takes her, resulting in a spontaneous variety of pieces.

She has completed many commissions, sells work on a regular basis and this year is included in the VAA International Online Exhibition Curators Choice Awards. She also exhibits in several galleries mainly in the South West and sells in the USA and Europe.

W: [www.carolinewalsh-waring.com](http://www.carolinewalsh-waring.com) E: [caroline@carolinewalsh-waring.com](mailto:caroline@carolinewalsh-waring.com)